



RECP #: 754595
 RECORDED 6/5/2019 AT 3:37 PM BK# 2624 PG# 264
 Debra K. Lee, CLERK OF LARAMIE COUNTY, WY PAGE 1 OF 1

STATE OF WYOMING CORNER RECORD

(In compliance with the CORNER PERPETUATION AND FILING ACT, Wyoming Statutes, 1997 Section 33-29-140, et. seq., and the Rules and Regulations of the Board of Registrations for Professional Engineers and Professional Land Surveyors)

SOUTHWEST CORNER SECTION 1, T. 17 N., R. 62 W., 6TH P.M., LARAMIE COUNTY, WYOMING

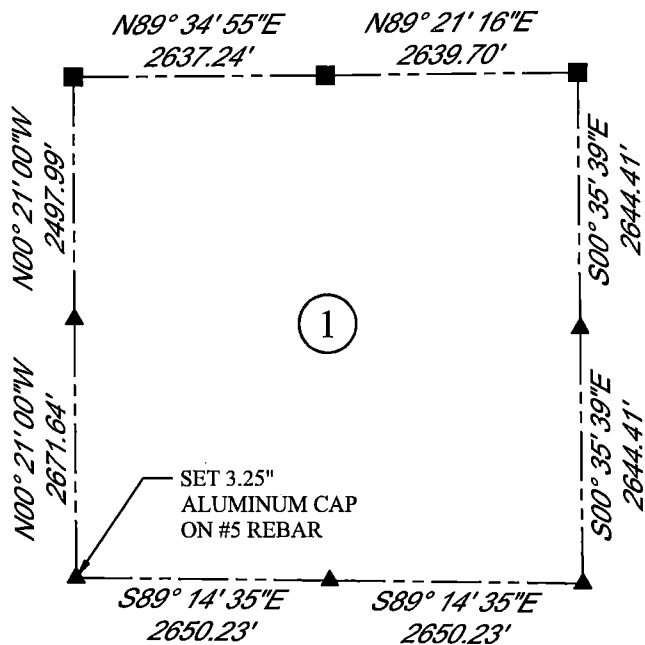
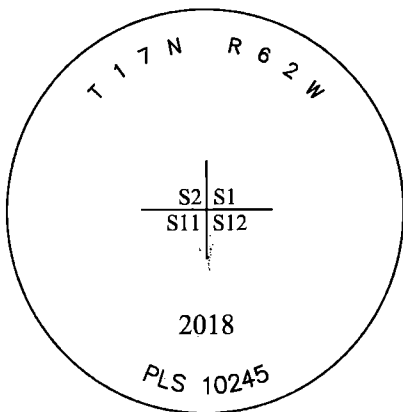
GLO: SANDSTONE 15X10X6 SET 10 IN DEEP MARKED WITH 5 NOTCHES ON SOUTH SIDE AND 1 NOTCH ON EAST SIDE FOR COR. TO SECS. 1, 2, 11, AND 12.

FOUND: NOTHING

SET: 3.25" ALUMINUM CAP ON #5 REBAR, 3" ABOVE SURFACE, MARKED AS SHOWN, SET A FIBERGLASS ROD ON NORTH SIDE.
POSITION RE-ESTABLISHED BY DOUBLE PROPORTION.



SCALE: NONE
 NORTH DETERMINED BY
 G.P.S OBSERVATIONS



LEGEND:

- FOUND BLM CAP
- FOUND USFS CAP
- FOUND STONE
- FOUND PRIVATE MONUMENT
- ▲ CALCULATED POSITION
- ◆ SET MONUMENT (LS10245)
- SECTION LINE

DATE OF FIELD WORK: 09/20/2018 OFFICE REFERENCE: MERIDEN

CROSS INDEX DIAGRAM

	1	2	3	4	5	6	7	8	9	10	11	12	13	14	15	16	17	18	19	20	21	22	23	24	25
A																									
B																									
C			6		5		4		3		2		1												
D																									
E																									
F																									
G			7		8		9		10		11		12												
H																									
J																									
K																									
L			18		17		16		15		14		13												
M																									
N																									
O																									
P			19		20		21		22		23		24												
Q																									
R																									
S																									
T			30		29		28		27		26		25												
U																									
V																									
W																									
X																									
Y			31		32		33		34		35		36												
Z																									

WOOD
 2615 AVIATION DRIVE
 SHERIDAN, WY 82801
 PH: 307-675-6400



THIS CORNER RECORD WAS
 PREPARED BY ME OR UNDER
 MY DIRECTION AND
 SUPERVISION,
 SEAL AND SIGNATURE

